

Lagan Education Services

Lagan CRM Training Brochure



LAGAN

About Lagan Education Services

Lagan Education Services offer a range of courses all of which are delivered by highly motivated and experienced trainers. Our classes provide a rich, hands-on experience for each student with extensive exercises and practical activities. The quality of instruction, blending real world experience and practical interaction, provides the perfect environment for skills transfer.

Training can be delivered at your site, thereby eliminating the need for costly travel for employees, or at our headquarters in Belfast; the latter option may be preferable if a small number of individuals need to receive training. We can tailor our training materials to reflect your business processes and/or technical needs thereby making the training more relevant to the students. Furthermore we can custom-build training programs specifically for you.

Details of courses available from Lagan Education Services are provided in this brochure. For details of our public course schedule visit our web site at www.lagan.com or for further information contact Education Services (training_request@lagan.com).

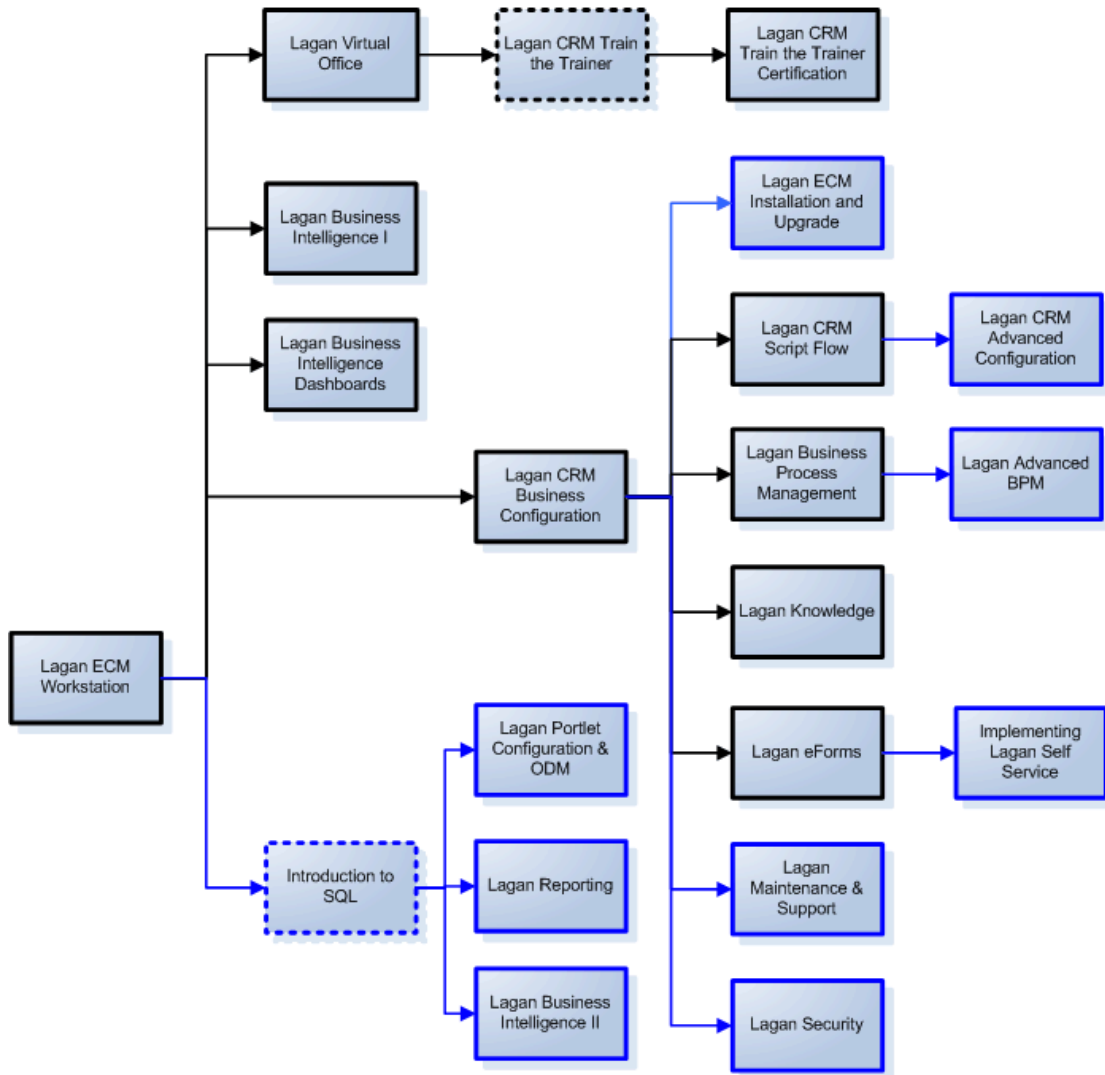
Note: Student training materials are provided in softcopy which is in keeping with our drive to become a paperless company and help protect the environment.

Contents

About Lagan Education Services	2
Course Dependencies.....	4
Lagan ECM Workstation™	5
Lagan Virtual Office™	6
Lagan CRM Train the Trainer	7
Lagan CRM Train the Trainer Certification	9
Lagan CRM Business Configuration	10
Lagan CRM Script Flow	11
Lagan Business Process Management (BPM)	12
Lagan Advanced BPM	13
Lagan Knowledge	14
Lagan Maintenance & Support.....	15
Lagan ECM Installation and Upgrade	16
Lagan CRM Advanced Configuration.....	17
Lagan eForms	18
Lagan Security	19
Lagan Portlet Configuration and ODM	20
Implementing Lagan Self Service	21
Lagan Reporting.....	22
Lagan Business Intelligence I: Fundamentals of Report Design.....	23
Lagan Business Intelligence II: Advanced Reporting.....	24
Lagan Business Intelligence Dashboards	25
Introduction to SQL	26
Roles and Skills Matrix.....	27

Course Dependencies

The diagram below illustrates the sequence in which the training courses must be taken. The organisation should therefore ensure that delegates have attended any pre-requisite courses.



- Courses suitable for technical Staff
- Courses suitable for both business analysts and technical staff; the latter may be required to attend in order to meet the prerequisites defined for technical courses
- ... (Dotted Line) optional courses. These may be relevant if the delegates need to acquire a specific skill-set to attend a Lagan course i.e. SQL skills for the Lagan Reporting course

Lagan ECM Workstation™

(CRM-WS)

PRE-REQUISITES

Computer literate with an understanding of your business processes

AUDIENCE

End-Users (Contact Centre Agents and Supervisors); Business Analysts; Report Writers, Support Engineers; In-House Trainers

COURSE OBJECTIVES

The course provides a high degree of hands-on, intensive training on the Lagan ECM Workstation™ to contact centre agents and supervisors. This is an example-driven course; we are happy to incorporate your own examples, providing they have been discussed with the trainer beforehand and sufficient time has been allocated for the course customisation.

DURATION

1 day

OVERVIEW

The course comprises of the following modules:

- Introducing Lagan ECM™
- Interactions
- Enquiries
- Cases
- Interaction Client
- New Customers
- Letter Templates
- Creating Cases Against Streets
- Updating Cases
- Linking Interactions to Cases
- Updating Records
- Messaging
- Relationships
- Letter Templates
- Searching for Cases
- Linking Cases
- Script Flow
- Case Handling

The course is supplemented with demonstrations and examples and provides the student with extensive hands-on product experience.

Lagan Virtual Office™

(CRM-VO)

PRE-REQUISITES

Computer literate with an understanding of your business processes

AUDIENCE

End Users (Back office workers and supervisors); In-House Trainers

OBJECTIVES

The course provides a high degree of hands-on, intensive training on the Lagan Virtual Office™ application to back office staff. This is an example-driven course; we are happy to incorporate your own examples, providing they have been discussed with the trainer beforehand and sufficient time has been allocated for the course customisation.

DURATION

0.5 days

OVERVIEW

The course comprises of the following modules:

- Introducing Lagan Enterprise Case Management™
- Logging Interactions
- Enquiries & Cases
- New Customers
- Handling Cases

The course is supplemented with demonstrations and provides the student with extensive hands-on experience.

Lagan CRM Train the Trainer

(CRM-TTT)

PRE-REQUISITES

- Lagan ECM Workstation™ (CRM-WS)
- Lagan Virtual Office™ (CRM-VO)

AUDIENCE

In-house trainers or those taking on a training role

OBJECTIVES

The course equips delegates with the knowledge and skills to carry out successful Lagan end-user training (Lagan ECM Workstation and Lagan Virtual Office) in their organisation. It includes topics such as how to facilitate learning for a range of adult learning styles, how to deal with difficult behaviours in the classroom and how to customise the end-user courses for their organisation's business processes.

The Train the Trainer course also provides delegates with a practical opportunity to plan and prepare a short training session on either the Lagan ECM Workstation or Lagan Virtual Office that will then be delivered during the Train the Trainer Certification course.

DURATION

2 days

OVERVIEW

The course comprises of the following modules:

- Theory
 - What is Training?
 - Learning Styles
- Preparation
 - Customising the Courseware
 - Structuring the Training Session
 - Setting Learning Objectives
 - Learning Methods
 - Review and Summary Techniques
 - Writing a Training Script
- Delivery
 - Starting up a Training Course
 - Using Questions
 - Visual Aids
 - Difficult Delegates

- Drawing the Course to a Close
- Presentation Skills
- Evaluation
 - Evaluating the Learning: The 4 Levels
- Activity Bank
 - Ice-breakers
 - Energisers
 - Games

WHERE TO NEXT

Lagan CRM Train the Trainer Certification

Lagan CRM Train the Trainer Certification

(CRM-TTT-CERT)

PRE-REQUISITES

- Lagan ECM Workstation™ (CRM-WS)
- Lagan Virtual Office™ (CRM-VO)
- Lagan Train the Trainer (CRM-TTT) OR excellent presentation and communication skills

AUDIENCE

In-house trainers

OBJECTIVES

The Lagan CRM Train the Trainer Certification course is designed to certify that delegates have the required skills and knowledge to deliver Lagan end-user training. It also provides delegates with the opportunity to review and strengthen their product knowledge before delivering their own training to end-users.

DURATION

1 day

OVERVIEW

In the morning session delegates will learn how to configure key business components of Lagan ECM such as groups and user accounts thereby enabling them to manage and maintain the training environment.

In the afternoon session, delegates are expected to demonstrate their product knowledge by delivering a short presentation (10 to 15 minutes) on any aspect of the Lagan ECM Workstation or Virtual Office applications i.e. case handling, logging interactions, setting the interaction client, etc to establish that their level of product knowledge is appropriate. The preparation and planning for the presentation should take place prior to this session.

Lagan CRM Business Configuration

(CRM-BC)

PRE-REQUISITES

- Lagan ECM Workstation™ (CRM-WS)
- General IT and business skills

AUDIENCE

Business Analysts; Support Engineers, Technical Configurators; System Integrators

OBJECTIVES

The course focuses on developing the skills necessary to configure and develop the Lagan ECM system using the Lagan Configuration Studio. It provides a high degree of intensive, hands-on product experience.

DURATION

2 days

OVERVIEW:

The course comprises of the following modules:

- Introducing Lagan Enterprise Case Management™
- Configuring User Accounts & Privileges
- Defining Work Queues
- Creating Classifications
- Configuring Cases Attributes
- Tasks and Escalation Rules
- Client Notifications
- Correspondence
- Case Study

Lagan CRM Script Flow

(CRM-SF)

PRE-REQUISITES

Lagan CRM Business Configuration (CRM-BC)

AUDIENCE

Business Analysts; Support Engineers

OBJECTIVES

This course is designed for users that will have responsibility for script design and content for the call centre and face to face operators of the Lagan ECM system

DURATION

2 days

OVERVIEW

The course comprises of the following modules:

- Introduction to Script Flow
- Designing and Building a Script Flow
 - Navigating the design screen
 - Submitting & Saving a Script Flow
 - Testing a Script Flow
- Script Flow Nodes
 - Adding and Linking Script Flow Nodes
 - Associating a Script Flow with an event
 - Running a Script Flow within the Lagan ECM Workstation
- Case Study
 - Provides delegates with the opportunity to put into practice the skills they have learnt during the 2 days

Lagan Business Process Management (BPM)

(ECM-BPM)

PREREQUISITES

Lagan CRM Business Configuration (CRM-BC)

AUDIENCE

Business Analysts; Technical configurators; Support Engineers; System Integrators

OBJECTIVES

To become familiar with the Lagan BPM interface and terminology; to configure complex business process maps; and to implement the solution's key functionality such as exception management, advanced resource configuration and SLA and cost monitoring

DURATION

3 days

OVERVIEW

The course comprises of the following modules:

- Lagan Business Process Management (BPM) – What's it all about?
- Getting Started: Introducing the Integrated Design Environment (IDE)
- Pulling it all Together
- Formatting Output Variables
- Building Advanced Business Process Maps
- State Management
- Categories; Documentation; Import and Export
- Work Queue Definitions
- Service Standards & Milestones
- Advanced Workflow
- Roles
- Activity Notifications
- Nested Maps and Sub Jobs
- Security and Job Scheduler
- Event & Exception Handling
- Administrative Suite

Lagan Advanced BPM

(ECM-ABPM)

PREREQUISITES

- Lagan CRM Business Configuration (CRM-BC)
- Lagan Business Process Management (ECM-BPM)
- An awareness of the following technologies: web services, XML, COM, VBScript, SQL

AUDIENCE

Technical Configurators; Support Engineers; System Integrators

OBJECTIVES

The course builds upon the knowledge and skills attained from the Lagan BPM course; specifically it looks at the technical and integration capabilities of the solution such as using web services, XML integration, COM objects and script activities

DURATION

1 day

OVERVIEW

The course comprises of the following modules:

- Introduction to the Developer Tools
- Script Activities
- XML Integration
- Web Service Activities
- Dynamic Resource Allocation
- Data Access Service Activity
- Using Lagan eForms

Lagan Knowledge

(ECM-KN)

PRE-REQUISITES

- Lagan CRM Business Configuration (CRM-BC)
- Lagan ECM Workstation (CRM-WS) OR experience of Lagan ECM in the Workplace

AUDIENCE

Business Analysts; Support Engineers

OBJECTIVES

This 2-day course provides delegates with the skills to build a knowledge management solution using Lagan Knowledge. Delegates will learn how to structure communities of knowledge and how to build out these communities with website pages, documents on file servers, and simple content via Lagan cases. The course also explores how to maintain and secure the knowledge using tools such as the document browser, the question browser, and the vocabulary maintenance screen. The course includes a case study that aims to cement the skills and knowledge learnt during the course presentations and exercises.

DURATION

2 days

OVERVIEW

The course comprises of the following modules:

- Introducing Lagan Knowledge
- Structuring Knowledge and Other Considerations
- Getting Started – Adding Knowledge
 - Web Sites and File Locations
 - Lagan Authored Solutions
 - Bulk Loader Tool
- Knowledge Search
 - Knowledge Search Demonstration
 - Configuring Knowledge Search
 - Solution Not Found? Defining an Escalation Process
- Maintaining your Knowledge
- Administrator Access
- Securing Knowledge
- Other Useful Features

Lagan Maintenance & Support

(ECM-MS)

PRE-REQUISITES

- Lagan CRM Business Configuration (CRM-BC) OR experience of Lagan ECM in the work place
- General IT skills

AUDIENCE

Support Engineers and those responsible for maintaining the Lagan ECM system

OBJECTIVES

The course aims to provide delegates with the skills and knowledge to support and maintain the Lagan ECM system

DURATION

1 day

OVERVIEW

The course comprises of the following modules:

- Lagan ECM Architecture
- Exploring Lagan Home
 - Properties Files
 - Logging
 - Menu & StandardToolbar
- Operational Tools
- Auditing
- Contacting Lagan Support

Lagan ECM Installation and Upgrade

(ECM-INST)

PRE-REQUISITES

- Lagan CRM Business Configuration (CRM-BC)
- General IT technical and database administrator skills
- An understanding of web technologies

AUDIENCE

Technical Configurators; Support Engineers

OBJECTIVES

The course aims to provide delegates with the knowledge to undertake a Lagan installation and/or upgrade. It also provides a high-level overview of the configuration required to certify the installation.

DURATION

1 day

OVERVIEW

The following topics will be covered:

- Introduction to the Lagan ECM system
- System components
- Lagan System Architecture
- Installation hardware and software prerequisites
- Installing and Configuring Lagan ECM
- The Quick Installation Wizard
- Certifying that the install was successful
- Upgrading to a later version

Lagan CRM Advanced Configuration

(CRM-AC)

PRE-REQUISITES

- Lagan CRM Business Configuration (CRM-BC)
- Lagan CRM Script Flow (CRM-SF)
- Database design and basic SQL skills are beneficial

AUDIENCE

- Technical Configurators; Support Engineers
- Business Analysts may also find this course relevant as it emphasises the scripting, business rules, and email capabilities of Lagan ECM; however these delegates should have a basic understanding of technical concepts

OBJECTIVES

This course aims to enhance the product knowledge and skills delegates attained from the Business Configuration and Script Flow courses. It examines Lagan ECM's out-of-the-box integration capabilities, for example with Microsoft Word, external databases, email servers, and web applications.

DURATION

1 day

OVERVIEW

The course comprises of the following modules:

- Retrieving Dynamic Data
- Creating Business Rules
- Letter and Email Templates
- Email Server Integration
- Customising Toolbars and Menus
- Advanced Script Flow Functionality
- Other Useful Features

Lagan eForms

(ECM-EF)

PRE-REQUISITES

- Lagan CRM Business Configuration (CRM-BC)
- knowledge of XML is beneficial

AUDIENCE

Business Analysts; Technical Configurators; System Integrators; Support Engineers

OBJECTIVES

The course provides delegates with the skills and knowledge to build Lagan eForms and implement complex functionality such as branching, disable rules and string arithmetic.

DURATION

2 days

OVERVIEW

The course comprises of the following modules:

- Introducing the eForm Builder
- Adding Page Elements
- Adding Logic to eForms
- eForm Buttons and Actions
- Advanced Field Elements
- Associating an eForm with a Process Definition and Auto Population
- eForm Design Guidelines
- Case Study

Lagan Security

(ECM-SEC)

PRE-REQUISITES

- Lagan ECM Workstation (CRM-WS) OR experience of Lagan ECM in the workplace
- Lagan CRM Business Configuration (CRM-BC)
- Database design and SQL skills OR Introduction to SQL (LAGAN-SQL)

AUDIENCE

Technical Configurators; Support Engineers

OBJECTIVES

The course examines Lagan ECM's security architecture and features including how to assign permissions to a user and/or groups of users, how to restrict access to specific data, and how to define which case classifications are available to a user and/or group of users.

DURATION

1 day

OVERVIEW

The course provides extensive hands-on experience in configuring Lagan ECM to match specific security requirements. Delegates will define permissions/privileges for groups of users, configure what data will be displayed within the Search, Contact History, Case Search, and Current Details screens, as well as define which classifications will be presented to a user / group of users when creating a Lagan case.

The course comprises of the following modules:

- Lagan Security – An Overview
- Authorisation Mechanisms
 - Functional Security
 - Create Case Security
 - Data Access Security
- Authentication Mechanisms

Lagan Portlet Configuration and ODM

(ECM-POC)

PRE-REQUISITES

- Lagan ECM Workstation (CRM-WS) OR experience of Lagan ECM in the Workplace
- Database design and SQL skills OR Introduction to SQL (Lagan-SQL)

AUDIENCE

Technical configurators; Support Engineers

OBJECTIVES

The course introduces the Lagan Object Data Model (ODM) and equips delegates with the knowledge and skills to configure portlets within the Lagan ECM Workstation and Virtual Office applications

DURATION

3 days

OVERVIEW

Lagan ODM provides you with the ability to model party (e.g. person and organisation), property, and relationship (e.g. relationships between parties, between parties and properties) objects. Object data can then be viewed through portlets within the Lagan ECM Workstation.

The course comprises of the following modules:

- Introducing Portlets
- Configuring Portlets
- Tabular Views
- Object Creation Wizard
- Object Data Model
- Configuring the Brief Details Panel
- New ODM Objects
- Search Configuration
- Object Extensions
- Relationship Information

Implementing Lagan Self Service

(ECM-SS)

PRE-REQUISITES

- Understanding of XML/XSLT
- Lagan ECM Workstation (CRM-WS) OR experience of Lagan ECM in the Workplace
- Lagan eForms (ECM-EF)

AUDIENCE

System Integrators; Support Engineers

OBJECTIVES

This hands-on course provides delegates with the skills and knowledge to deploy the Lagan Self Service toolkit within their organisation. Delegates will be given an introduction to web services and an in-depth explanation of the available Lagan web services. They'll learn how to use the Lagan WSDL to create web service calls as well as how to generate, test, and diagnose problems with web service calls using tools such as SoapUI and TCPTrace. The second day will involve a case study where delegates will work at their own pace, to construct exemplar web pages that enable customers to create a Self Service account, request a bulky waste collection, report a pothole, and track the progress of an outstanding case.*

DURATION

2 days

OVERVIEW

The course comprises of the following modules:

- Introducing Lagan Self Service
- Introduction to Lagan Web Services and WDSL
- Implementing Security
- SoapUI and eForms
- Managing Returning Data
- Tracking Utility
- Debugging
- Case Study: Building a Self Service Solution with Lagan eForms*

* Delegates attending this course at a public venue will develop any required eForms, for the case study component, within Lagan's own eForm package. Those delegates attending an onsite course, where Lagan eForms are not being used, can utilize their chosen eForm package to complete this component. In these instances, however, the Lagan trainer will only provide assistance with the structure of the Web Service calls and it is expected that delegates will be proficient in building the eForms within their chosen package.

Lagan Reporting

(ECM-SP)

PRE-REQUISITES

- Lagan ECM Workstation (CRM-WS) OR experience of Lagan ECM in the workplace
- Introduction to SQL (LAGAN-SQL) OR strong SQL skills that includes experience of writing complex SELECT statements that include aggregate functions, inner and outer joins, (correlated) sub queries, and GROUP BY clauses

AUDIENCE

Report Writers; Support Engineers; Technical Configurators

OBJECTIVES

This hands-on course explores the Lagan Reporting Schema and how to use this to produce operational and strategic reports. Delegates will, by the end of the day, have built up a library of reports including reports that illustrate case queue volumes, case handling times, user workloads, interaction volumes per party, interaction volumes per channel, etc; these can then be deployed, if appropriate, within their organisation.

DURATION

1 day

OVERVIEW

The course comprises of the following modules:

- Reporting Architecture
- Report Building Process
- Reporting on Forms and eForms
- Other Tables

The course is supplemented with demonstrations and provides the student with extensive hands-on experience.

Lagan Business Intelligence I: Fundamentals of Report Design

(ECM-BI-01)

PRE-REQUISITES

Lagan ECM Workstation (CRM-WS) OR experience of Lagan ECM in the workplace

AUDIENCE

Business Analysts; Support Engineers, Report Writers

OBJECTIVES

The course explores Lagan's Business Intelligence (BI) offering including how to run the template reports provided with the solution and how to design and author ad hoc reports using the Report Builder interface

DURATION

1 day

OVERVIEW

The course comprises of the following modules:

- BI Components
- Introducing the Report Manager
- Report Delivery
- Authoring Ad Hoc Reports
 - Navigating the Report Builder
 - Creating tabular, matrix and chart reports
 - Applying Filters
 - Grouping and Sorting Data
 - Creating Reports with Parameters
- Reporting Tools Compared
- Linked Reports

Lagan Business Intelligence II: Advanced Reporting

(ECM-BI-02)

PRE-REQUISITES

- Lagan ECM Workstation (CRM-WS) OR experience of Lagan ECM in the Workplace
- Lagan Business Intelligence I: Fundamentals of Report Design (recommended but not essential) (ECM-BI-01)
- Introduction to SQL (LAGAN-SQL) OR strong SQL skills that includes experience of writing complex SELECT statements that contain aggregate functions, inner and outer joins, (correlated) sub queries, GROUP BY clauses, and the UNION command
- Previous experience of report development including requirements capture and design

AUDIENCE

Report Writers; Technical Configurators; Support Engineers

OBJECTIVES

The course enhances the knowledge and skills acquired from the course, Business Intelligence I: Fundamentals of Report Design. It explores the BI architecture, the reporting schema, and the Report Designer interface. Delegates will use the reporting schema to write SQL queries to retrieve specific data from the Lagan ECM database. They will then be introduced to the Report Designer interface in which they can design the actual layout of the report and include functionality such parameters, drill-down, and drill-through. They'll then explore the various delivery options and examine how security can be applied to the report. The course also illustrates how to write reports that include eForm and/or case form data.

DURATION

3 days

OVERVIEW

The course comprises of the following modules:

- Business Intelligence Architecture and Online Documentation
- Writing the Report SQL
- Report Lifecycle
- Authoring Reports
- Deploying and Delivering Reports
- Securing Reports

Lagan Business Intelligence Dashboards

(ECM-BI-003)

PRE-REQUISITES

Lagan ECM Workstation (CRM-WS) OR experience of Lagan ECM in the Workplace

AUDIENCE

Business Analysts; Report Writers

OBJECTIVES

The course explores what dashboards are, how these can be used to improve your business, and how to customise and create new dashboards

DURATION

1 day

OVERVIEW

The course comprises of the following topics:

- What are Dashboards?
- Dashboard Data Structure
- Advanced View Editing
- Dashboard Chart Types
- Setting & Monitoring Thresholds
- Collaboration Features
- Case Study

Introduction to SQL

(LAGAN-SQL)

PRE-REQUISITES

No prior SQL training or relational database experience is assumed; however it is beneficial to have an understanding of basic database principles

AUDIENCE

Support Engineers, Technical Configurators, Report Writers, IT Professionals

OBJECTIVES

The course provides delegates with the skills and knowledge necessary to write simple through to complex SQL queries. It is therefore of benefit to individuals with no SQL experience or those with limited experience wanting to enhance their skills in navigating the database and writing more complex queries. The course is supplemented with extensive hands-on exercises.

DURATION

3 days

OVERVIEW

The following topics will be covered:

- RDBMS and Normalisation
- What is SQL?
- SQL DML SELECT
- Scalar and Aggregate Functions
- Advanced SELECT statement Components
- Joining Tables
- Sub Queries
- Set Operators
- DML – INSERT, UPDATE, DELETE
- DDL and DCL Statements
- Inline Views
- Performance

Roles and Skills Matrix

This section details which Lagan training courses are relevant to specific job roles that may exist within an organisation. It should be noted that these are only guidelines and that the exact courses an individual should attend will be determined by the functions and role(s) they will perform in implementing and maintaining the Lagan solution. If required, Lagan can conduct a training needs analysis to identify appropriate courses for individuals.

End Users

These individuals use the Lagan ECM Workstation or Lagan Virtual Office to handle customer interactions via the phone, email, fax etc and/or to process Lagan cases.

GENERAL SKILLS

They should be computer literate and have a basic understanding of the organisation's processes.

SUGGESTED COURSES

End-users can be broadly divided into two groups: (1) front-office workers i.e. those individuals working in the contact centre dealing with customers and (2) back-office workers i.e. those individuals who work in the various departments.

The table below lists the suggested course for front-office workers and their supervisors.

Code	Course Title	Duration
CRM-WS	Lagan ECM Workstation (Lagan EWS)	1

The following table details the suggested course for back-office or departmental staff.

Code	Course Title	Duration
CRM-VO	Lagan Virtual Office (Lagan VO)	0.5

In-House Trainers

These are individuals that design and deliver in-house training to employees. The suggested courses ensure that they have the skills and knowledge to deliver Lagan ECM end-user training to contact centre agents and supervisors.

GENERAL SKILLS

- Strong presentation skills
- Computer literate
- Knowledge of the organisation's processes
- Experience of delivering IT courses on a one-to-one basis or to small groups of individuals

SUGGESTED COURSES

Code	Course Title	Duration
CRM-WS	Lagan ECM Workstation (Lagan EWS)	1
CRM-VO	Lagan Virtual Office (Lagan VO)	0.5
CRM-TTT-	Lagan CRM Train the Trainer	2
CRM-TTT-CERT	Lagan CRM Train the Trainer Certification	1

Business Analysts

These individuals are responsible for mapping the organisation's business processes and then configuring these within the Lagan ECM system.

GENERAL SKILLS

They should have a broad understanding of Customer Relationship Management (CRM) and have some experience of Business Process Re-Engineering (BPR) and process mapping.

SUGGESTED COURSES

Code	Course Title	Duration
CRM-WS	Lagan ECM Workstation (Lagan EWS)	1
CRM-BC	Lagan CRM Business Configuration	2
CRM-SF	Lagan CRM Script Flow	2
ECM-EF	Lagan eForms	2

Code	Course Title	Duration
ECM-BPM	Lagan Business Process Management (BPM)	3
ECM-KN	Lagan Knowledge	2
ECM-BI-01	Lagan Business Intelligence I: Fundamentals of Report Design	1
ECM-BI-03	Lagan Business Intelligence Dashboards	1

Support Engineers

These are individuals within the organisation that will provide in-house support and assistance to end-users when issues arise. They will also be responsible for the maintenance and management of the overall Lagan ECM system. As such they will require a broad and extensive knowledge of the Lagan ECM system.

GENERAL SKILLS

Typically these individuals will already perform a customer support role and should have strong technical skills including database and SQL skills, knowledge of XML and of web services.

SUGGESTED COURSES

Code	Course Title	Duration
CRM-WS	Lagan ECM Workstation (Lagan EWS)	1
CRM-BC	Lagan CRM Business Configuration	2
CRM-SF	Lagan CRM Script Flow	2
CRM-AC	Lagan CRM Advanced Configuration	1
ECM-EF	Lagan eForms	2
ECM-MS	Lagan Maintenance and Support	1
ECM-POC	Lagan Portlet Configuration and ODM	3
ECM-INST	Lagan ECM Installation and Upgrade	1
ECM-BPM	Lagan Business Process Management (BPM)	3
ECM-ABPM	Lagan Advanced BPM	1
ECM-KN	Lagan Knowledge	2
LAGAN-SQL	Introduction to SQL *	3

* The Introduction to SQL course is NOT required if the individual has experience of writing complex SQL queries.

Code	Course Title	Duration
ECM-SP	Lagan Reporting*	1
ECM-BI-01	Lagan Business Intelligence I: Fundamentals of Report Design	1
ECM-BI-02	Lagan Business Intelligence II: Advanced Reporting	3
ECM-SS	Implementing Lagan Self Service	2
ECM-SEC	Lagan Security	1

Technical Configurators

These are individuals who will be responsible for implementing the technical aspects of Lagan ECM including email server configuration, extraction of data from the Lagan ECM database or external databases, configuration of user screens (i.e. portlets), implementation of security policies, and configuration of eForms.

GENERAL SKILLS

They should be technical experts with SQL skills, knowledge of database stored procedures, and web services, and familiar with writing XML.

SUGGESTED COURSES

Code	Course Title	Duration
CRM-BC	Lagan CRM Business Configuration	2
CRM-SF	Lagan CRM Script Flow	2
CRM-AC	Lagan CRM Advanced Configuration	1
ECM-EF	Lagan eForms	2
ECM-SEC	Lagan Security	1
ECM-POC	Lagan Portlet Configuration and ODM	3
ECM-BPM	Lagan Business Process Management (BPM)	3
ECM-ABPM	Lagan Advanced BPM	1
ECM-MS	Lagan Maintenance and Support	1
LAGAN-SQL	Introduction to SQL [†]	3

* The Lagan Reporting course is NOT required if the Lagan Business Intelligence solution has been purchased.

† Introduction to SQL is NOT required if the individual has experience of writing complex SQL queries.

Code	Course Title	Duration
ECM-SP	Lagan Reporting*	1
ECM-BI-02	Lagan Business Intelligence II: Advanced Reporting	3
ECM-INST	Lagan ECM Installation and Upgrade	1

System Integrators

These individuals should be experienced technical developers who are responsible for integrating Lagan ECM with external applications.

GENERAL SKILLS

- Knowledge of XSLT and XPath
- XML skills
- Knowledge of web technologies

SUGGESTED COURSES

Code	Course Title	Duration
CRM-BC	Lagan CRM Business Configuration	2
ECM-EF	Lagan eForms	2
ECM-SS	Implementing Lagan Self Service	2
ECM-BPM	Lagan Business Process Management (BPM)	3
ECM-ABPM	Lagan Advanced BPM	1

Report Writers

These are individuals responsible for designing and producing complex operational and MIS reports.

GENERAL SKILLS

Strong knowledge and experience of writing SQL queries

SUGGESTED COURSES

* The Lagan Reporting course is NOT required if the Lagan Business Intelligence solution has been purchased.

Code	Course Title	Duration
CRM-WS	Lagan ECM Workstation (Lagan EWS)	1
LAGAN-SQL	Introduction to SQL [*]	3
ECM-SP	Lagan Reporting [†]	1
ECM-BI-01	Lagan Business Intelligence I: Fundamentals of Report Design	1
ECM-BI-03	Lagan Business Intelligence Dashboards	1
ECM-BI-02	Lagan Business Intelligence II: Advanced Reporting	3

^{*} This course is NOT required if the individual has experience of writing complex SQL queries.

[†] The Lagan Reporting course is NOT required if the Lagan Business Intelligence solution has been purchased.

